

2023 BCI Annual Convention in Shuyang, China

September 29 to October 5, 2023

Hosted by BCI and Shuyang County People's Government

Program

September 28

Arrival of Delegates with Accommodation at Night

September 28

6:30 PM

Registration, Welcome Party

September 29

9:00 AM to 12:00 PM

Opening and Awards Ceremony, Ribbon Cutting, and Viewing of Entries

September 29

2:30 PM to 6:00 PM

Demonstrations, Lectures, Viewing of Entries

September 30

8:00 AM to 5:00 PM

City Tour

October 1

9:00 AM to 12:00 PM

Demonstrations, Lectures, Farewell Party

October 2-5

Optional

Viewing of Entries



Dear Bonsai Friends,

More than 1300 pieces of penjing and stone works will be on parade at the Exhibition, the largest penjing exhibition in Chinese penjing history. Of course, the 10th Shuyang Flower and Tree Festival will also add more wonderful content.

We invite you to come and witness a historic convention, further enhance the mutual understanding and develop the friendship between us and share our happiness at the same time.

See you in Shuyang City!

Chen Chang

Chairman of BCI China Committee

Chairman of WBFF, China Region

General Director of Flower Bonsai & Stone Branch of the Chinese Society of Landscape Architecture



Shuyang, the town of flowers and the hometown of Consort Yu.

Consort Yu (died 202 BC), also known as “Yu the Beauty,” was the wife of the warlord Xiang Yu, who competed with Liu Bang (Emperor Gao), the founder of the Han dynasty, for supremacy over China in the Chu–Han Contention (206–202 BC). The romance of Xiang Yu and Consort Yu has been the subject of plays, films and television series.

The Shuyang Flower and Tree Festival





Top: Shuyang County is known throughout the country for its reform and innovation.

Bottom: National Modern Agriculture Industrial Park was successfully established, with flowers and seedlings as the leading industry.

Shuyang County

Shuyang County was named after Shushui Zhiyang (shortened to Shuyang), located at the juncture of Xuzhou, Lianyungang, Huai'an, and Suqian. It belongs to the transition zone between Lunan Hills and Jianghuai Plain. Shuyang is known throughout the country for its reform and innovation. It has created the most impressive “Shuyang speed” and experience. The county

economy and basic competitiveness rank among the “National Top 100 counties” and the “national top 100 industrial counties.” Shuyang Economic and Technological Development Zone is the only state-level economic and technological development zone settled in a county-level city in Northern Jiangsu. In 2022, the County achieved a GDP of 130.845 billion yuan and a general public budget revenue of 6.07 billion yuan.



Shuyang flowers and landscape trees

Located at 34° north latitude, Shuyang is located in the South-north climate transition zone of China, which is suitable for the growth of a variety of flowers and trees. It is an ideal transfer place for the south-to-north migration of flowers and the south-to-south migration of trees. Dating back to the Ming and Qing Dynasties, the juniper stump penjing in the Hujia Garden of Zhouquan Village, Xinhe Town, was cultivated in 1508. It has a history of more than 500 years, which is a testament to the long history of Shuyang flower and tree cultivation.

In December 2020, the National Modern Agriculture Industrial Park was successfully established, with flowers and seedlings as the leading industry.

Shuyang Penjing

The whole County has 1.2 million pots of various types of penjing, of which 300,000 are unique, such as Shuyang juniper penjing and potted grafted *Osmanthus fragrans* (Fragrant olive), all of which are widely known throughout the country. “Shuyang School” penjing has become one of the characteristic industries of Shuyang flowers and trees. The county has more than 10,000 penjing professional production personnel, with the industry recognized by the six national and provincial penjing masters, training more than 5,000 professional and technical personnel. Shuyang successively organized the six “China Shuyang Elite Penjing Invitational Exhibition,” the 10th National Penjing Exhibition, the First National Penjing Vocational Skills Competition, and other state-designated penjing activities.

Shuyang Flower and Tree Market

It has more than ten large flower and tree distribution markets and centers, such as the China Shuyang International Flower and Seedling Market, the Shuyang Flower and Seedling World, Zhouquan Penjing Market, and Xinhe Flower and Tree E-commerce Demonstration Street. In 2022, the new East China Flower and Landscape Tree World was built, covering an area of 1500 mu (100 hectares or 247 acres) with a total investment of 3 billion yuan. It will mainly cover five characteristic pavilions and 250,000 square meters of greenhouses.

Shuyang Flower and Tree E-commerce

Shuyang County is a nationally renowned county for the largest e-commerce of flowers and trees, and its sales volume accounts for one-third of the national total. There are more than 50,000 active online stores of all kinds. “Shuyang E-commerce” and “Shuyang Penjing Craftsman” were selected as provincial labor service brands and won the honorary title of “Top 100 Digitalized Counties of Agricultural Products” by the Ministry of Agriculture and Rural Affairs.

The Shuyang Flower and Tree Festival

Up to now, the China Shuyang Flower and Tree Festival has been successfully held for nine sessions. It is a comprehensive large-scale festival led by government



and industry organizations. It integrates nursery stock, landscape, flowers, gardening, penjing, fish viewing, root carving, stone appreciation, painting and calligraphy, photography exhibition, and so on. Integrating professional, ornamental, artistic, commercial, and, interestingly, it not only has professional exhibitions and technical forums but also holds a variety of entertainment, food, and rural tourism activities. It is a national flower and tree industry event with a large scale in China, with many participants and a vast influence, and also a rural tourism festival brand in Jiangsu Province. In 2023, it will continue to hold the 10th Shuyang Flower and Tree Festival and the annual main Exhibition of the 2023 International Penjing Congress.

Top: The whole County has 1.2 million pots of various types of penjing, of which 300,000 are unique, such as Shuyang juniper penjing and potted grafted *Osmanthus fragrans* (Fragrant olive)

Bottom: The new East China Flower and Landscape Tree World covers an area of 1500 mu (100 hectares or 247 acres) has 5 characteristic pavilions and 250,000 square meters of greenhouses.



Former residence of Wu Yinxian is reconstructed on the original site, and it has the original appearance, an art exhibition hall, and three parks.



Shuyang Touring Former residence of Wu Yinxian

Wu Yinxian (1900-1994) was a famous photographer and cinematographer who documented the life of foremost Chinese Communist Party leaders such as Mao Zedong, as well as the activities of the Eighth Route Army in Yan'an from the late 1930s to the 1940s.

The former residence is reconstructed on the original site, and it has the original appearance, an art exhibition hall, and three parks. Eight turrets comprise childhood memories, feelings of home and country, artistic life, and various themes such as lifelong aspirations to show Wu's glorious life.

Shuyang Hujia Garden



Shuyang Hujia Garden

Shuyang's brand originates from the "Town of flowers and trees." Green mountains, water pavilions, bridges, and water people unfold like a simple and elegant ink painting. The penjing of the earth cypress given by the emperor "lying on the moon" is the treasure of the town garden with a history of half a century.

Huaguo Mountain scenic spot in Lianyungang



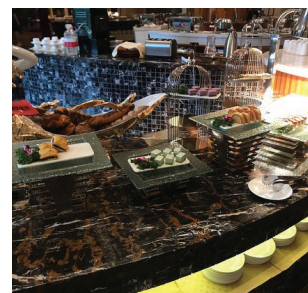
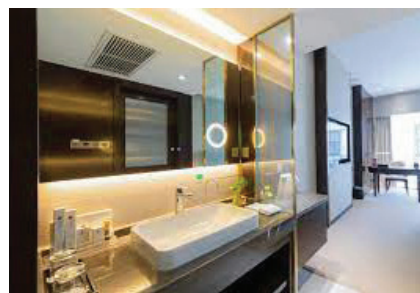
Huaguo Mountain scenic spot in Lianyungang

Huaguo Mountain is located at the foot of Nanyuntai Mountain in Lianyungang City, Jiangsu Province. It is a national 5-acre tourist area and a national geopark. It is famous for its classic novel Journey to the West.

Shuyang boasts a range of star-rated hotels in the heart of the city

Accommodation

Shuyang boasts a range of star-rated hotels in the heart of the city and has options to suit every budget. Visitors can choose from city hotels, self-catering apartments, and budget hotels with panoramic views of the southern city. 🏨



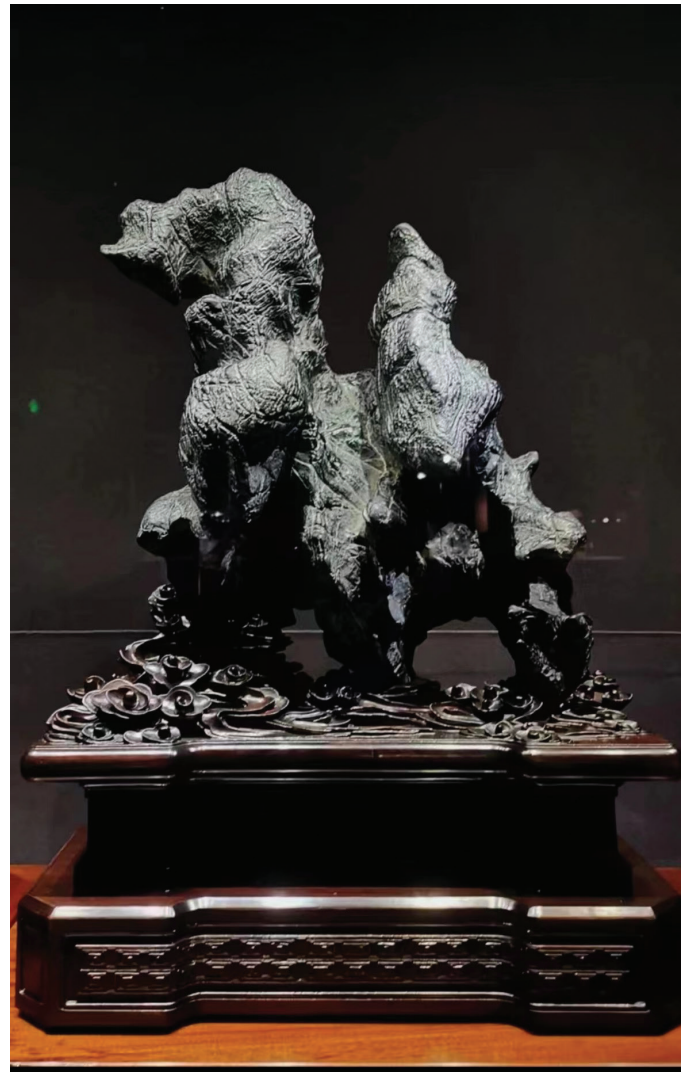
Penjing







Viewing Stones





More than 1300 penjing and viewing stones will be on display at the BCI Annual Convention Exhibit in Shuyang, the largest penjing exhibition in Chinese penjing history.

